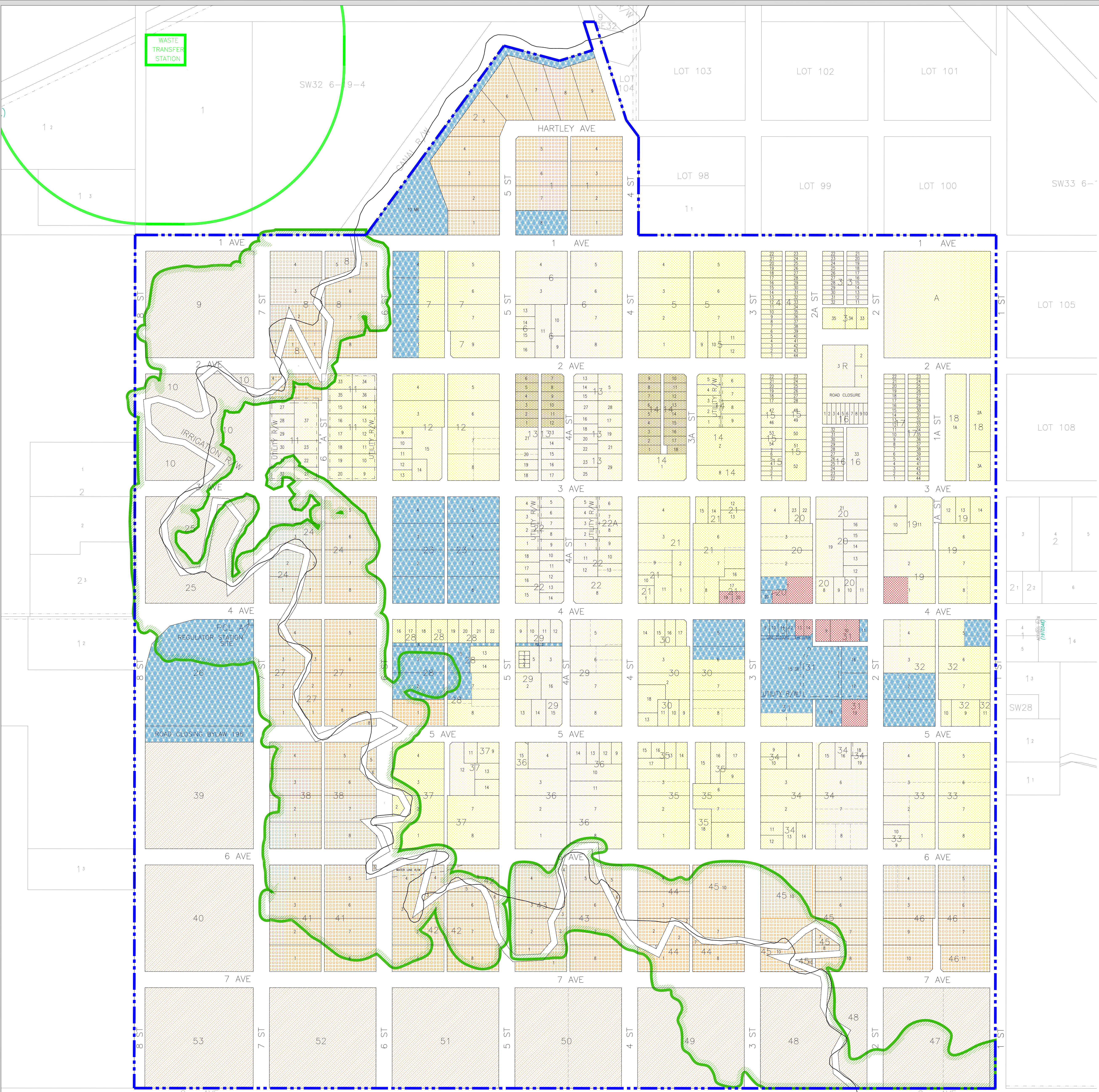


# VILLAGE OF STIRLING

All Sec 30, And  
Portion Of SW 1/4 Sec 32  
In Twp 6, Rge 19, W4M



VILLAGE OF  
**STIRLING**  
NATIONAL HISTORIC SITE

LAND USE DISTRICT MAP  
Bylaw 415-08, April 2, 2008  
Map Amended to Bylaw # 533-23, February 15, 2023

- Residential (R)
- Manufactured/Modular Home Residential (R-M)
- Residential Large-Lot (R-L)
- Commercial (C)
- Industrial / Business (I/B) \*  
\*(no lots zoned at this time)
- Public (P)
- Agricultural (A)
- Kipp Coulee Area Overlay

MAP PREPARED BY:  
OLDMAN RIVER REGIONAL SERVICES COMMISSION  
3105 16th AVENUE NORTH, LETHBRIDGE, ALBERTA T1H 5E8  
TEL. 403-329-1344  
"NOT RESPONSIBLE FOR ERRORS OR OMISSIONS"

PLOT SCALE 1:3000

